



4236-01 BASAL - SILKEN TOFU, 1345-03 FILBERT - IRON GATE

The Brentano Design Studio, led by Iris Wang, has grown from a modest eight patterns in 1990, into an international source for residential, hospitality and commercial fabrics and wallcoverings. The range has expanded to include luxurious vegan leathers, sophisticated indoor/outdoor choices, dynamic stain resistant and easy clean finish options, as well as a beautiful collection of eco-friendly textiles.

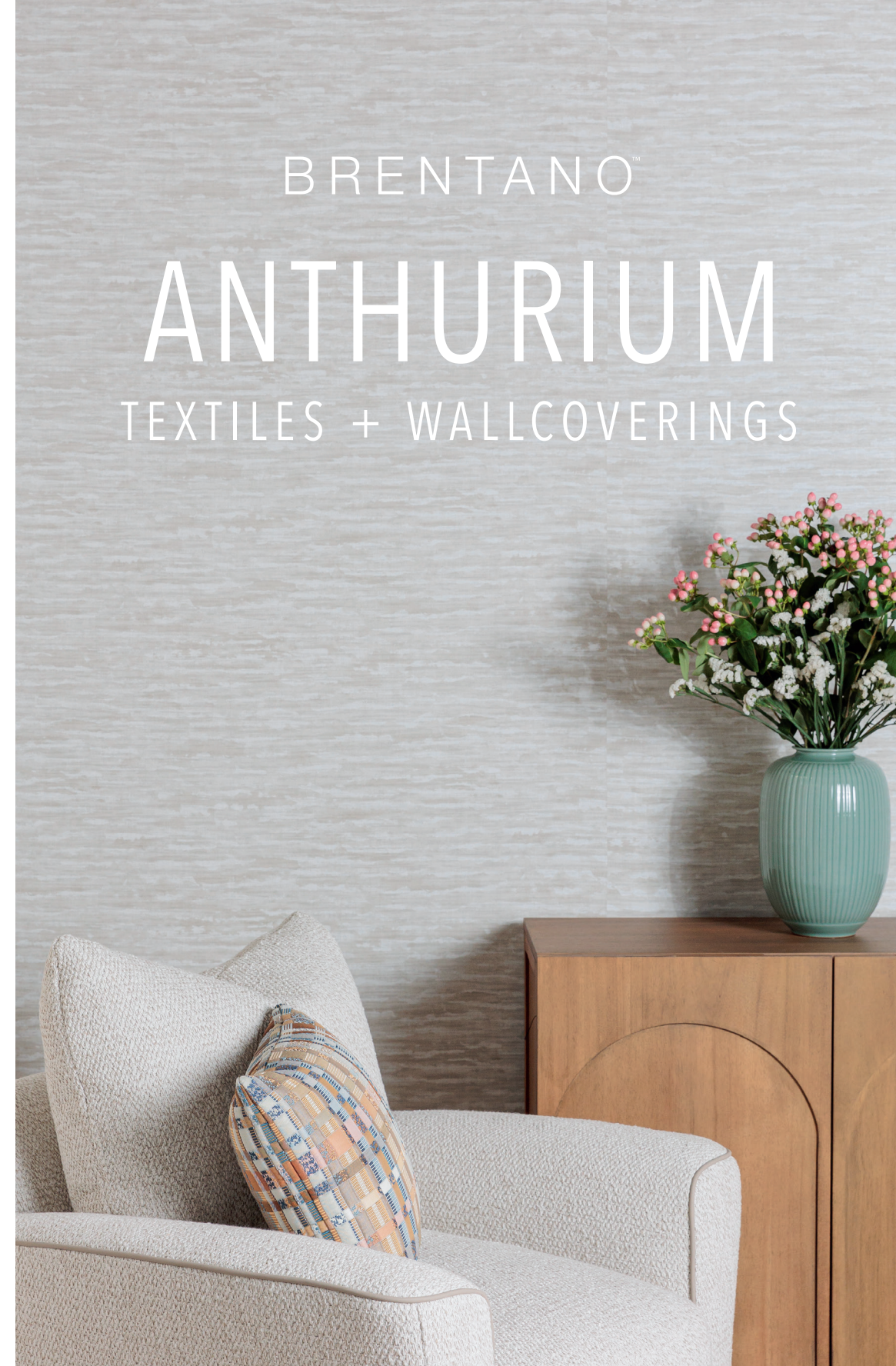
**BRENTANOFABRICS.COM**

260 Holbrook Drive, Wheeling, IL 60090  
T: 847.657.8481 | [customerservices@brentanofabrics.com](mailto:customerservices@brentanofabrics.com)

# BRENTANO™

# ANTHURIUM

TEXTILES + WALLCOVERINGS





# ANTHURIUM

Brentano's Spring 2024 Collection, Anthurium, is a compilation of textiles and wallcoverings woven into painterly layers. Designed through the lens of an artist, the collection showcases Founder Iris Wang's deep love for painting and the wide breadth of artistic skill she brings to each versatile design.

Highlighting magnificent and lush fabrics, the collection features 4 outdoor velvets that create striking monochromatic design spaces. The collection also showcases Brentano's first PVC-Free wallcoverings, Guild and Lona. A new challenge for the team, the studio explored different mediums to create depth and painterly-like qualities. Through their pursuit of artistic growth, the 2 wallcoverings were born, bringing to life a world in which thick brushstrokes and whimsical layers of color transport one to impressionist-styled interiors.

1334 GOUACHE - PORCELAIN TAUPE, BORIE, TUMBLEWEED, OAT MILK, FOGGY DAY



V103-04 HIKARU - POWDER BLUE , 4262-05 ANDAMENTO - SKYLINE, 4121-01 AKARI - WHITE LIGHT

## ANTHURIUM COLLECTION TEXTILES + WALLCOVERINGS



SGRAFFITO 01



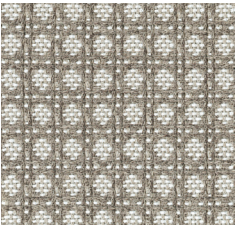
ROSEMARY 03



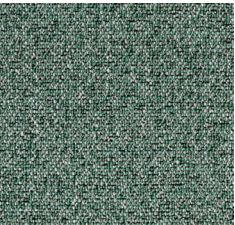
HACHURE 05



GOUACHE 04



FILBERT 02



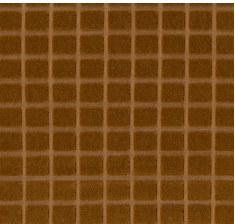
STIPPLING 05



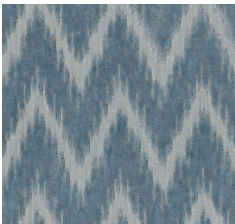
TRIPTYCH 01



BASAL 03



SMALTI 04



ANDAMENTO 05



MOSAIC 02



PATCHWORK 04



GUILD 07



LONA 04



4236-01 BASAL - SILKEN TOFU, 4262-02 ANDAMENTO - BEIGE FAUNA, 9648-06 HACHURE - MOSS PATHWAY, 2220-03 STIPPLING - WILDBEEST