

HAIKU - SAGUARO FLOWER, FANTASIA - BRASS BELL,
DARSHA - RETRO MINT, NOTES - LONDON FOG,
BALLAD - CREMELLO, VERSAILLES - SHEEP DOG



HOURLASS - ROMAN STATUE, AZLIN - LEMUR, DARSHA - MONTANA SAPPHIRE,
HUDDLE - WOODEN PENCIL, GEM - ZIRCON, STANZA - CREMELLO

The Brentano Design Studio, led by Iris Wang, has grown from a modest eight patterns in 1990, into an international source for residential, hospitality and commercial fabrics and wallcoverings. The range has expanded to include luxurious vegan leathers, sophisticated indoor/outdoor choices, dynamic stain resistant and easy clean finish options, as well as a beautiful collection of eco-friendly textiles.

BRENTANOFABRICS.COM

260 Holbrook Drive, Wheeling, IL 60090
T: 847.657.8481 | customerservices@brentanofabrics.com

BRENTANO ROYA COLLECTION

TEXTILES + WALLCOVERINGS

With charming patterns and soft colorways, the Brentano Design Studio has captured the nuanced characteristics of our dreams with each and every fiber.



ROYA

Soft, poetic, and tailored, Brentano's Spring 2023 Collection, Roya, is a timeless offering of sophisticated textiles + wallcoverings. The collection name is derived from Arabic origin, meaning vision or dream, and is inspired by the fantastical and delicate fleeting moments that come to us in times of peace. Each stunning pattern highlights our dreams' subtle and delicate journey and the phases of progression from tranquil to mysterious.

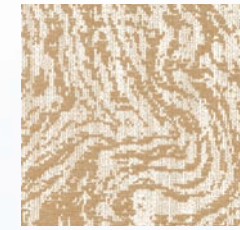
A tremendous grouping of usable fabrics, the Roya Collection features fabrics + wallcoverings that span many applications, including contract, hospitality, and residential designs. Using novelty yarns throughout, Roya highlights chunky textures, contemporary anchor fabrics, and bold horizontal designs for the most discerning interior spaces.

FEATURED FABRICS FROM THE 2023 SPRING COLLECTION, ROYA

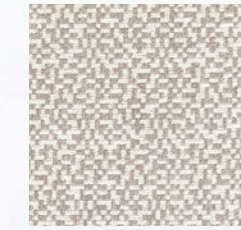


HOURGLASS - EGYPTIAN SUN

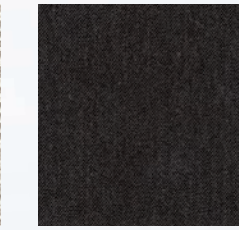
ROYA COLLECTION TEXTILES + WALLCOVERINGS



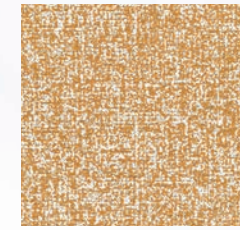
AYSEL 03



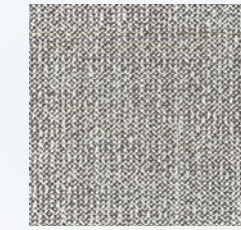
NIRVANA 01



NIDRA 06



DARSHA 05



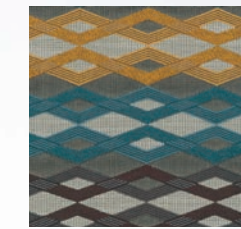
AZLIN 03



FANTASIA 06



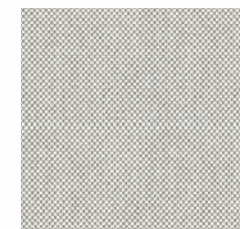
FANTASIA PANEL 04



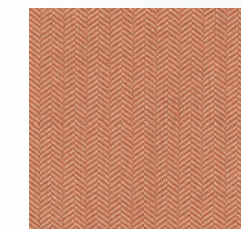
XANADU 07



BHRAMARI 03



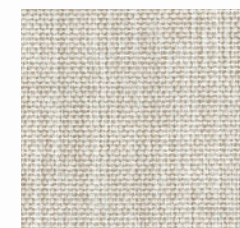
PRANAYAMA 01



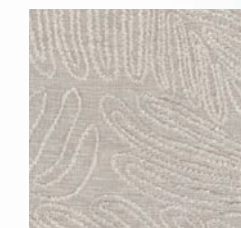
UJJAYI 06



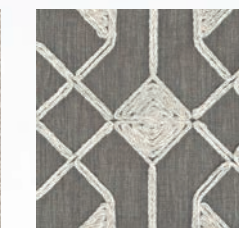
REM 05



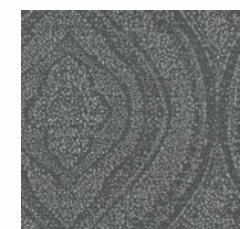
ODE 01



BALLAD 02



STANZA 03



HOURGLASS 08



HAIKU 3

Comprised of light, muted tones, the Roya Collection evokes emotion, creating soothing spaces with delicate movement and grace. Using feelings to create imagery, the Brentano Design Studio curated a distinct pairing of 15 textiles and 2 wallcoverings that play off our passions and infatuations. While each pattern is unique and desirable on its own, the textiles also build off one another to create light, monochromatic design spaces with varying levels of pattern and texture.

Visually rich, the collection features Brentano's first-ever wallcovering mural with a stunning blend of colorwork. This collection's centerpiece, Haiku, stands at an impressive 11-foot height, pulling inspiration from its textile counterpart Utopia. "I've long dreamt of creating a mural," said Iris Wang, Founder and Artistic Director. "The process to get to this point was a lengthy one. The entire Design Studio came together for this multi-layered project with many nuanced subtleties. I couldn't be more enamored with the final design. It is the culmination of a lot of hard work and dedication."

NIRVANA, ALL COLORWAYS

