



BRENTANO™
ROYA COLLECTION

TEXTILES + WALLCOVERINGS

ROYA

Soft, poetic, and tailored, Brentano's Spring 2023 Collection, Roya, is a timeless offering of sophisticated textiles + wallcoverings. The collection name is derived from Arabic origin, meaning vision or dream, and is inspired by the fantastical and delicate fleeting moments that come to us in times of peace.

Each stunning pattern highlights our dreams' subtle and delicate journey and the phases of progression from tranquil to mysterious.



HAIKU

First-ever wallcovering mural with a stunning blend of colorwork.

OUTDOOR

Luxury outdoor embroidery fabrics, Ballad and Stanza.

FANTASIA

Raffia-inspired Fantasia is a tailored selection for shade outdoor spaces.

BLEACH CLEANABLE
PERFORMANCE



AYSEL

Like a stream of water rushing in, Aysel's combination of movement and refined coloring coincides with its name's Turkish meaning of a flood or stream of moonlight. Much like works of impressionist painters, Aysel uses visual angles, soft brushstrokes, light, and the inclusion of movement as crucial elements of its design.

Elegant yet decorative enough for modern homes, Aysel comes in 8 attractive colorways, including a soft blush and a chic, warm grey. Reminiscent of marble or wood grain, this 55" width soft chenille with a matte finish is fluid throughout with a lustrous warp yarn to create a subtle rhythmic design flow.

Contents:

83% Polyester, 15% Acrylic,
2% Linen

ROYA



AZLIN

From Arabic origin, meaning night vision or dream, Azlin is the protagonist of the Roya Collection. Soft-spoken with stunning visual interest, Azlin is a boucle fabric that comes in 4 neutral colorways that combine harmoniously with a white or grey base yarn. Azlin is a dream centerpiece in any high-end residential design or contract design space in need of a contrasting, heavily textured anchor fabric. With a tremendous hand, at 55" in width and an abrasion resistance of 100,000 Double Rubs (Wyzenbeek, Cotton Duck), this chunky fabric can be further enhanced by the addition of Brentano's cross-linked Tri-sistant finish for additional performance features.

Contents:

37% Acrylic, 30% Polyester, 18% Cotton, 13%
Virgin Wool, 2% Nylon

BACTERIAL RESISTANT
BLEACH CLEANABLE
INDOOR/OUTDOOR

BALLAD

The next generation of outdoor fabric, 56" width Ballad overlays Brentano's Solution-Dyed Polypropylene textile Ode with a beautiful, raised embroidery in a tranquil, organic pattern. The splendor of Ballad, like a slow, sentimental song, comes through in three colorways, all classic neutrals with a leaf overlay design. Each Ballad colorway coordinates with Ode from the Roya Collection and sister embroidery fabric, Stanza. With a base abrasion of 100,000 Double Rubs (Wyzenbeek, Wire Screen) and 5,000 Double Rubs for the embroidery yarn, Ballad is great for creating dynamic, layered spaces in indoor/outdoor interiors.

Contents:

96% Solution-Dyed Polypropylene,
4% Solution-Dyed Acrylic



BACTERIAL RESISTANT
BLEACH CLEANABLE
INDOOR/OUTDOOR

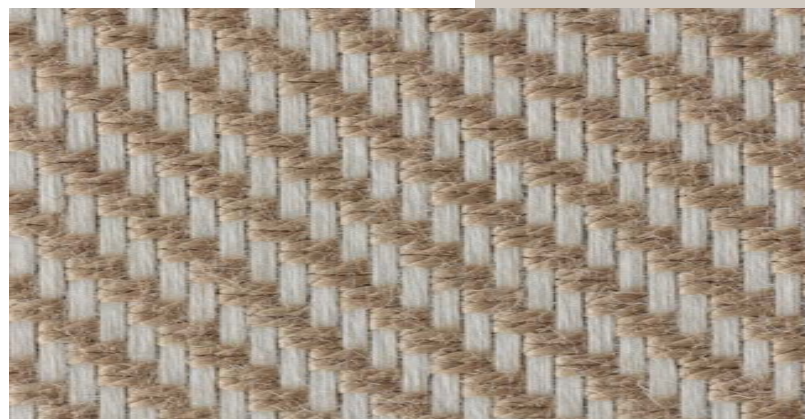
BHRAMARI

Bhramari, meaning "Humming Bee Breath," was affectionally named by the Brentano Design Studio for its steady and calming classic twill design. With an abrasion resistance of 15,000 Double Rubs (Wyzenbeek, Wiresreen) and Trisistant finish, this 60" width bleach cleanable fabric is suitable for residential projects or low-traffic hospitality spaces with a domestic appeal.

A bacterial resistant, 100% Solution-Dyed indoor/outdoor Acrylic, Bhramari comes in 8 colorways offering neutrals to deeper, bold selections including Vanilla Glaze, Chamomile and Black Phoebe. With exceptional lightfastness, Bhramari can withstand sunny conditions as statement pillows or upholstered side tables.

Contents:

100% Solution-Dyed Acrylic



BLEACH CLEANABLE
PERFORMANCE



DARSHA

Relaxed and pliable, Darsha is a jacquard pattern made from 100% Polyester content. With its bouclé texture, complementing colors, and dappled appearance, Darsha is a modern take on a classic construction, enhancing a feeling of casual luxury. The fabric's name derived from Hindi origin means to see, to perceive, and to have vision; the speckled nature of the pattern embodies the particles of one's thoughts and feelings coming into focus. In 7 fresh colorways, this 56" width upholstery fabric complements the rest of the Roya collection and serves to expand the relevance of this family of fabrics.

Contents:
100% Polyester

ROYA

BACTERIAL RESISTANT
BLEACH CLEANABLE
INDOOR/OUTDOOR



FANTASIA

Raffia-inspired Fantasia uses a random basket weave to create naturalistic, textured indoor/outdoor* design spaces. In 6 varying neutrals, ranging from sophisticated greys to Dark Java browns, Fantasia is well-suited for warm, covered environments such as hotel atriums with skylight windows or patio decks with natural sun covers. With an abrasion resistance of 100,000 Double Rubs (Wyzenbeek, Cotton Duck) and a non-woven backing, this 58" width bleach cleanable and bacterial resistant fabric is a durable choice for contract and hospitality applications.

*For outdoor design spaces, Fantasia is recommended for shaded areas only. The fabric is known to shrink in excessive heat.

Contents:

74% Polyethylene, 26% Polypropylene

ROYA

BLEACH CLEANABLE
PANEL

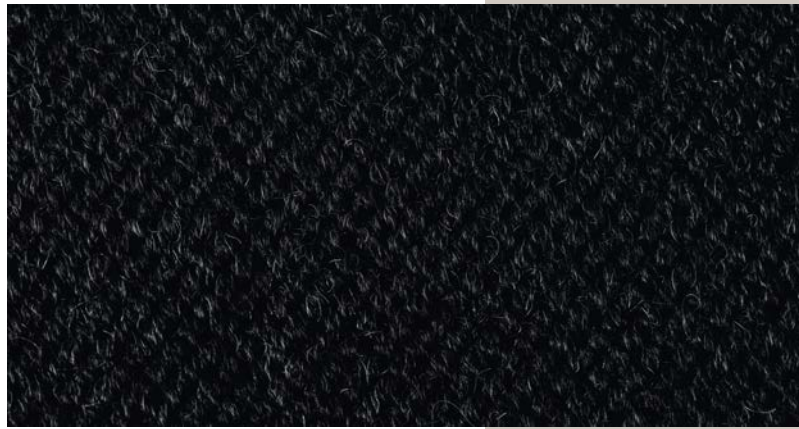
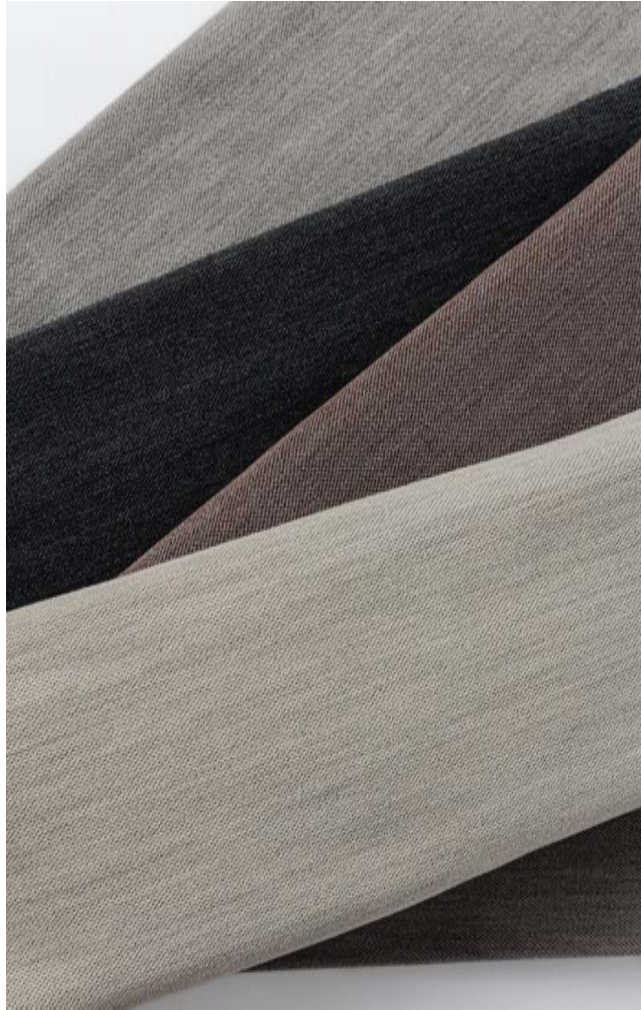


FANTASIA PANEL

Fantasia Panel adds luxury to the tailored interior. Comfortable for the upscale restaurant or structured pieces like headboards, Fantasia Panel's 100% Polyethylene content passes ASTM E-84 Class A (Unadhered) and is suitable for acoustical panel applications. The 58" width, bleach cleanable panel fabric's straw appearance is offered in 6 versatile earthy colorways, much like its sister indoor/outdoor upholstery fabric, Fantasia.

Contents:
100% Polyethylene

ROYA



NIDRA

Contemplative and calm Nidra is a contemporary anchor fabric lovingly named after a state of consciousness between waking and sleeping, induced by guided meditation. A beloved weave construction of Founder Iris Wang, Nidra is an epingle textile that embodies the Korean words Jiseong Mi, meaning rationally beautiful. A natural, heathered look is achieved from a blend of dyed wool, with a cotton ground. In 6 plush neutrals, including Carbonado and Black Ink, Nidra is a controlled, understated textile ideal for classic designs for the most discerning hospitality and residential projects.

Contents:

Pile: 100% Wool; Overall: 62% Wool,
38% Cotton

ROYA

BLEACH CLEANABLE
PERFORMANCE



NIRVANA

Finding balance in the chaos, Nirvana, is an enlarged crepe design made of organic, segmented breaks. Playfully interpreting its namesake in pattern form, Nirvana's structured design creates a transcendent space with a natural sense of intermittent, sporadic activity. Seamlessly paired with its sister fabric Aysel, Nirvana comes in 9 colorways, such as muted Pistachio Whip or bold Spiced Persimmon. Featuring flecks of linen throughout the warp used to create textural interest, 56" width Nirvana is resilient with an abrasion resistance of 100,000 Double Rubs (Wyzenbeek, Cotton Duck), Brentano's Tri-sisant finish, and bleach cleanability.

Contents:

83% Polyester, 15% Acrylic,
2% Linen

ROYA

BACTERIAL RESISTANT
BLEACH CLEANABLE
INDOOR/OUTDOOR

ODE

A perfect complement to Brentano patterns Ballad and Stanza, Ode has a subdued texture with 5 adaptable colorways. With an abrasion of 100,000 Double Dubs (Wyzenbeek, Wire Screen), the 57" width indoor/outdoor 100% Solution-Dyed Polypropylene fabric is bacterial resistant and bleach cleanable making it a smart choice for outdoor environments. Ode's concentrated selection of hues offers a full range of neutrals, including soft colorways like Cremello and Wild Mushroom, to more profound and bold colors like Chimney Sweep. A perfect anchor fabric, Ode is stunning in residential, contract, and hospitality spaces for indoor or outdoor designs.

Contents:

100% Solution-Dyed Polypropylene



ROYA

BACTERIAL RESISTANT
BLEACH CLEANABLE
INDOOR/OUTDOOR

PRANAYAMA

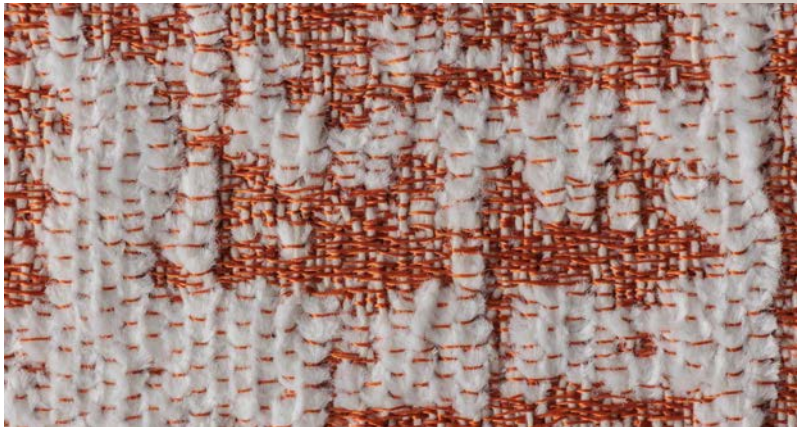
Pranayama, a yoga technique for regulating one's breath, is broken into two parts, "prana," meaning life energy, and "Yama," meaning control. The contrasting warp and weft yarns of Pranayama's design create a synergy in unison with its namesake throughout its small-scale checkerboard design. With 100% Solution-Dyed Acrylic content, Pranayama is an indoor/outdoor fabric with 9 colorways ranging from gentle neutrals to bolder, more contrasting selections. An abrasion resistance of 15,000 Double Rubs (Wyzenbeek, Wire Screen), Tri-sistant finish, bacterial resistance, and bleach cleanability makes this 59" width fabric well-suited for low-traffic outdoor upholstery applications.

Contents:
100% Solution-Dyed Acrylic



ROYA

ROYA



REM

Emulating fast-paced movement through powdered white line breaks and brushstrokes, the energetic design of Rem is a lively addition to the Roya collection. Drawing its inspiration from the vivid and frequent eye movement during Rem sleep, this dynamic textile brings a bit of excitement and anticipation to design spaces. Available in 7 soothing colorways, including a fresh red and crisp blue, Rem is a versatile textile with a usable color palette. This 55" width 100% FR Polyester fabric is a lovely choice for upholstery or panel; alternatively, it also makes a stunning statement drapery. For pattern-on-pattern designs, Rem offers a sophisticated look with soft texture to add minimal pops of color and visuals.

Contents:
100% FR Polyester

BACTERIAL RESISTANT
BLEACH CLEANABLE
INDOOR/OUTDOOR

STANZA

Like the lines that form the basic recurring metrical unit in a poem, Stanza is a lyrical, consistent, geometric design with a dimensional embroidered pattern. The stunning 56" width fabric features a 50" wide embroidery that adds intricate elements of splendor to indoor/outdoor projects. Embroidered on the durable 100% Solution-Dyed Polypropylene base of Ode, Stanza boasts an impressive abrasion resistance of 100,000 Double Rubs (Wyzenbeek, Wire Screen) for the base and 60,000 Double Rubs for the embroidery yarn. Stanza is offered in 3 contemporary neutral colorways that are also bacterial resistant and bleach cleanable, making it a must for creating a lavish accent in any interior space.

Contents:

100% Solution-Dyed Polypropylene



ROYA

BACTERIAL RESISTANT
BLEACH CLEANABLE
INDOOR/OUTDOOR



UJJAYI

Ujjayi, referred to as "ocean breathing" by avid yoga lovers, is a deep breathing technique that begins in the belly and rises to the chest. A playful mimicking of its namesake, Ujjayi's peaks and valleys pattern pairs two colors, one in the warp and one in the weft, enhancing the delicate herringbone design. In 8 colorways, including Soothing Aloe and Black Phoebe, Ujjayi's 100% Solution-Dyed Acrylic content pairs seamlessly with sister fabrics Pranayama and Bhramari.

Contents:
100% Solution-Dyed Acrylic

ROYA

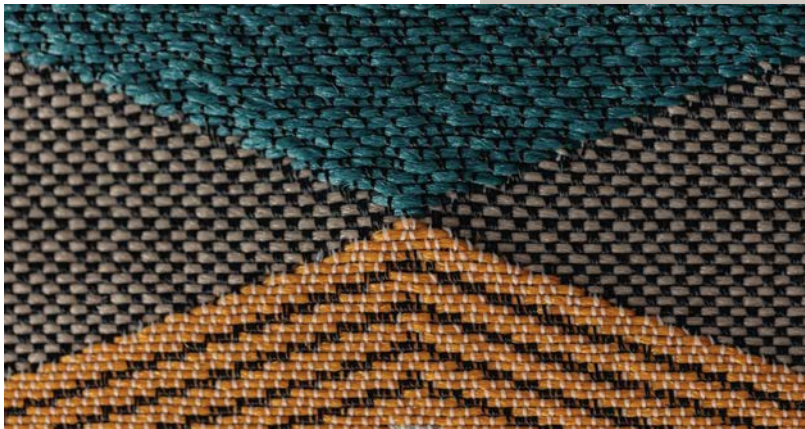
BLEACH CLEANABLE
ECO-FRIENDLY
PERFORMANCE

XANADU

Xanadu, meaning idyllic or dreamy beauty, is a 54" wide textile with multiple layers and colorways. The Brentano Design Studio loved the color blocking, geometric design, textural layers, and comprehensive weave structures in Xanadu that create various unique color layers. Ideal for healthcare, senior living, and hospitality design applications, Xanadu comes in 8 colorways, from the softer Seaside to the bold Hidden Treasure and Halcyon Feather. With 31% Post-Consumer Recycled Polyester, Xanadu is one of Brentano's many eco-friendly fabrics and is available for possible LEED points.

Contents:

38% HED Polyester, 31% HED PC Recycled Polyester, 31% Solution-Dyed Nylon



ROYA

ROYA COLLECTION

WALLCOVERINGS



WALLCOVERING
BLEACH CLEANABLE
PHTHALATE FREE

HAIKU

A long-awaited and highly anticipated project, the Brentano Design Studio's first foray into murals is a stunning display of curated colorwork and design. This mural is comprised of three panels, each seaming at 52" in width. Digitally printed Haiku gestures a bespoke woven beauty, depicting a dreamlike landscape of whimsical foothill forests and sumptuous gardens. At an 11-foot height, Haiku's true-to-scale design sets the scene and transports onlookers into its simple, abstract landscape of semi-stylized brushstrokes and organic elements. A monumental project for the design studio, Haiku is the culmination of complex design and focused hours of concentration and time.

Contents:

100% Non-Phthalate Vinyl Face; Overall:
85% Vinyl, 13% Polyester, 2% Cotton



ROYA

WALLCOVERING
BLEACH CLEANABLE
PHTHALATE FREE



HOURGLASS

Drawing inspiration from its textile counterpart, Ogee, Hourglass is a traditional, symmetrical design curated from small dots on the textural surface of the wallcovering that forms a pattern when viewed from afar. A 54" width, bleach cleanable Type II, Phthalate-Free Vinyl with a non-woven backing, Hourglass comes in 8 regal colorways, including Greek Temple, Roman Statue, and Renaissance Wine. Hourglass is a classic addition to residential, contract, and hospitality designs with organic beauty, metallic ink, and a textured base. The majestic beauty of Hourglass makes it a useable wallcovering selection for banquet halls, formal living rooms, or up-scale restaurant lounges .

Contents:

100% Non-Phthalate Vinyl Face; Overall:
85% Vinyl, 12% Cellulose, 3% Polyester

ROYA



BRENTANO™
ROYA COLLECTION
TEXTILES + WALLCOVERINGS





















